

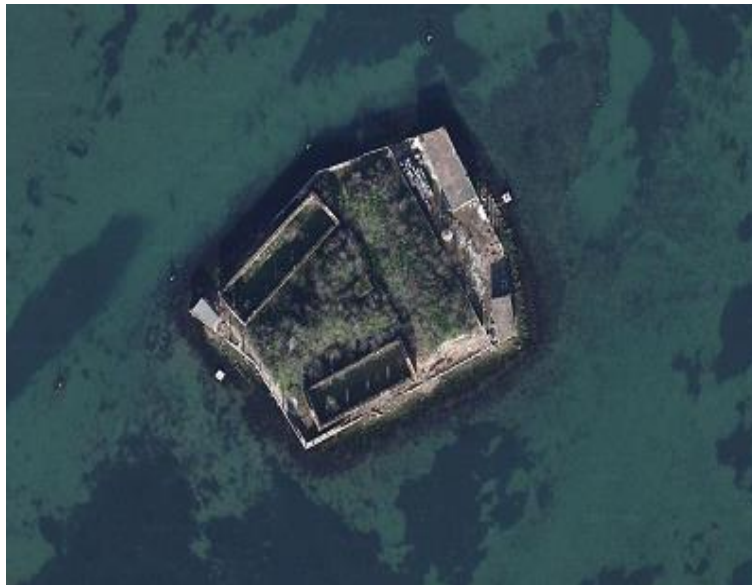
# 0309 – Sant'Angelo delle Polveri Island

---

Venice - Sant'Angelo delle Polveri

# 0309 – Sant’Angelo delle Polveri Island

Venice - Sant’Angelo delle Polveri



## Ownership

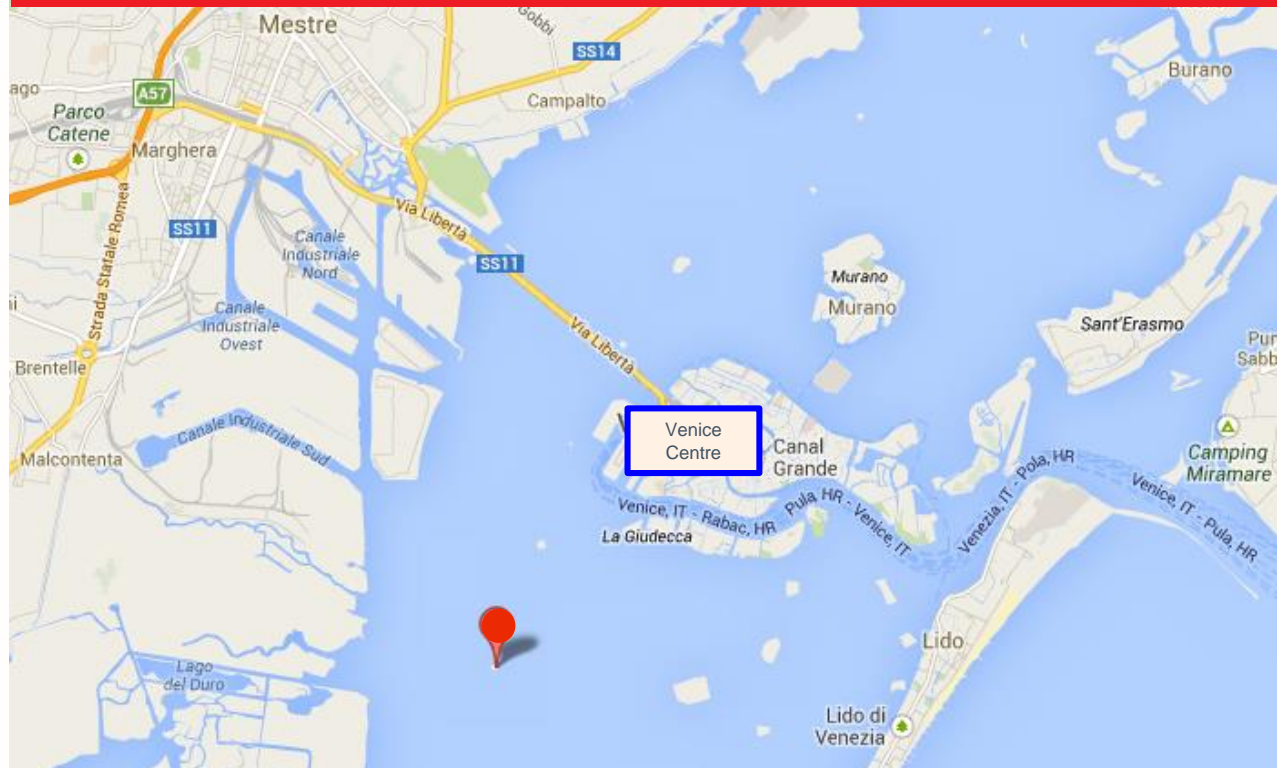
100% FIV – Extra Fund

## Location

Sant’Angelo della Polvere is an island in the Venetian Lagoon, situated in the Contorta channel in the south-west.

It can only be reached by private boat and the current landing point is a recently built jetty.

## Venice, Sant’Angelo della Polvere



# 0309 – Sant’Angelo delle Polveri Island

Venice - Sant’Angelo delle Polveri

<b>Description</b>	The island, with a surface area of over 5,000 sqm, was used for military installations up to World War II. Today it has six structures of different types, in precarious condition.
<b>Restrictions</b>	Subject to restrictions by the Ministry of Cultural Heritage and Activities.
<b>Occupancy status</b>	Vacant.
<b>Planning status - Procedure for development</b>	The island falls within an area subject to the amendment to the general planning regulations. All work on the buildings exceeding unusual maintenance and restoration, and all work on the outdoor spaces exceeding maintenance and nature restoration must be part of a single project covering the entire island, including the arrangement of the outdoor spaces and subject to the drawing up of an agreement.

Property details	
Data	
Surface area	5,400 sqm
Floor space	1,150 sqm
Outdoor area	4,212 sqm
Developed area	Approximately 1,165 sqm



*CDP Investimenti Sgr SpA does not make any declaration or assume any responsibility for the completeness, correctness and accuracy of the information provided on the property sheet or in relation to any errors, omissions and/or imprecise statements they may contain.*

*CDP Investimenti SGR S.p.A does not provide any guarantee and cannot be held responsible in any way for the use and/or reliance of the interested parties on the data/documents/information made available on the property sheet. The assessments of the documentation and of the information, the relevant examination and the decisions taken as a result of said assessments are under the full autonomy and discretionary power of each interested party.*

*The interested parties expressly acknowledge that CDP Investimenti Sgr SpA may at any time, and at its own discretion, amend and/or supplement the documentation contained in the property sheet without any prior notification.*

*This publication is not an offer to the public or in any way a commitment made by CDP Investimenti Sgr SpA to begin and/or conclude negotiations regarding the property.*